

PLANT LIST:

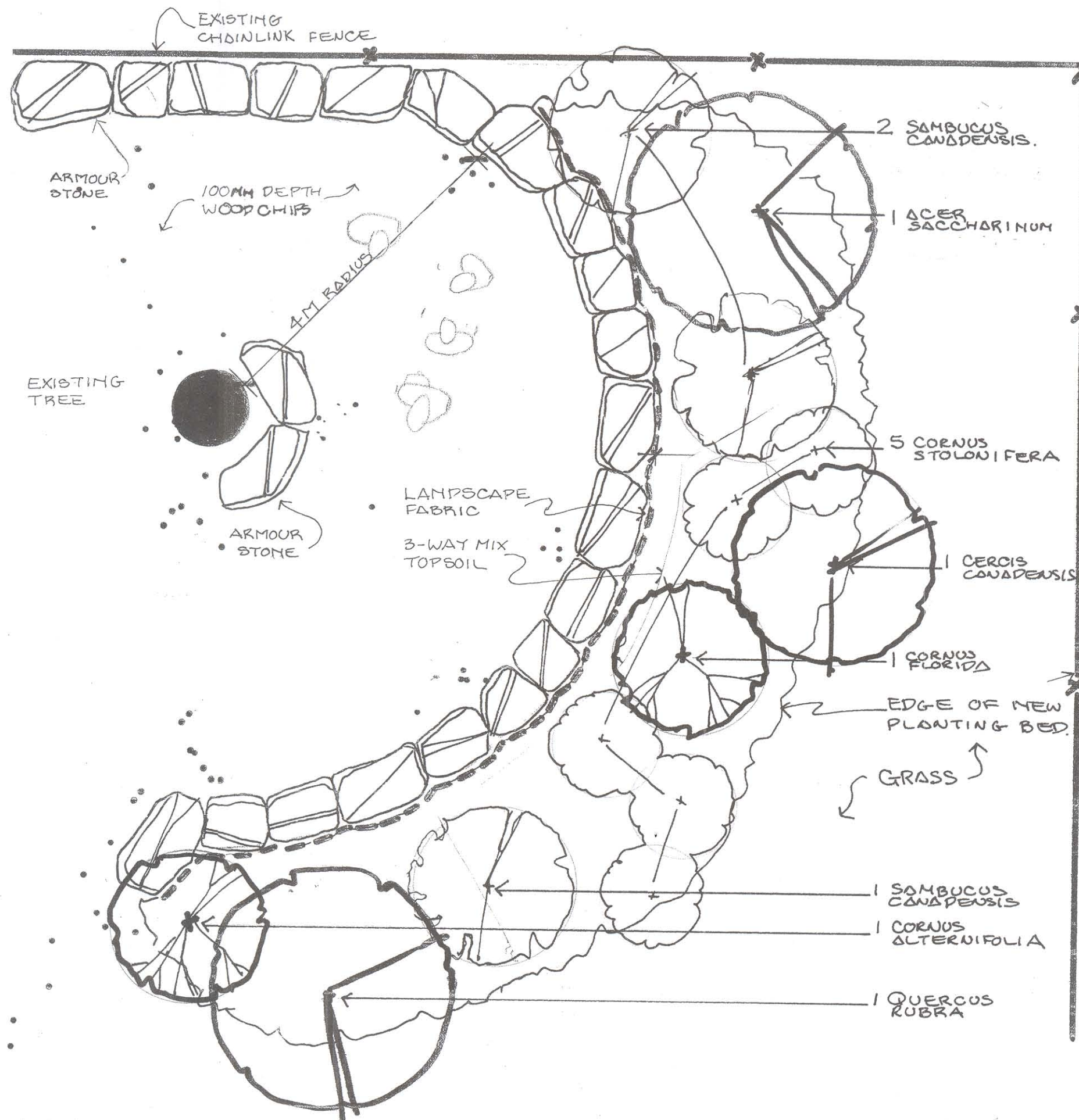
Symbol	Species	Common Name	No.	Size & Comments
AC	Acer saccharinum	Silver maple	1	65mm cal./WB
ER	Cercis canadensis	Eastern Redbud	1	1.5M multi stem/WB
QR	Quercus rubra	Red Oak	1	65mm cal. WB

SHRUBS:

CP	Cornus alternifolia	Pagoda dogwood	1	1.5M Ht.
CF	Cornus florida	White flowering dogwood	1	1.5M Ht.
CS	Cornus stolonifera	Red twig Dogwood	5	600mm Ht.
SC	Sambucus canadensis	Elderberry	3	600mm Ht.

NOTES:

1. Locate all services prior to any external works.
2. All dimensions should be verified on site, any discrepancies should be brought to the notice of the Landscape Architect.
3. Sizes given are only given as minimum sizes larger sizes may be used at clients discretion.
4. Plants used are to have a minimum one-year guarantee.
5. To all-planting beds apply 75mm bark mulch.
6. Prune all existing trees and shrubs to remove diseased, dead and damaged branches.
7. All healthy plants are to remain and the new planting is to integrate with the existing where possible.
8. Once planted ensure plants get enough water and transplant fertiliser in the first few weeks.
9. All tree surgery work is to be carried out by a qualified and insured tree surgeon.



The Reading Circle:

Planting Plan

St. Michael's Catholic School,
London Ontario.

SCALE: 1:50

DESIGN & DRAWN BY



NORTH